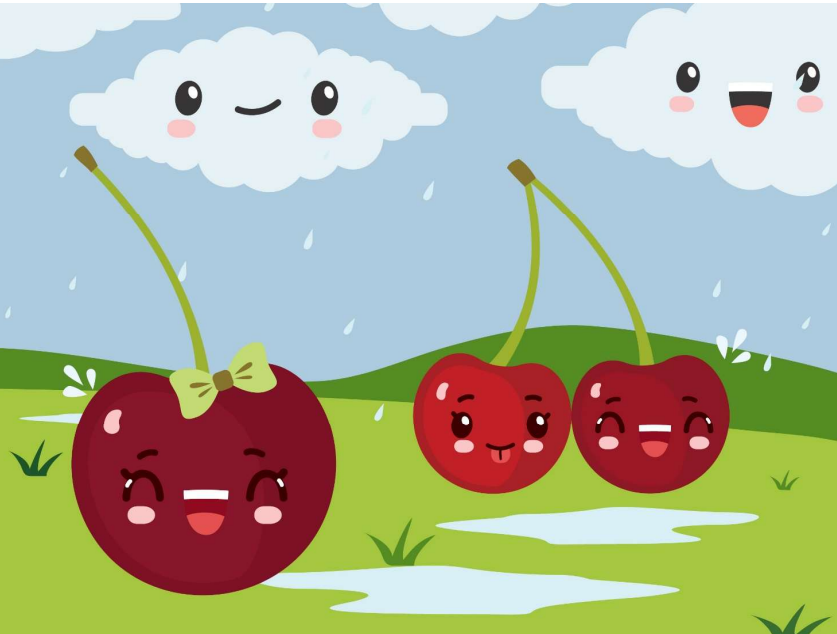




APRIL 2024 Breakfast Menu



ACE'S CORNER



Milk: 1% White & Fat Free Chocolate Milk are offered daily at breakfast!

WG = Whole Grain

MONDAY		TUESDAY		WEDNESDAY		THURSDAY		FRIDAY	
No School	1	Cinnamon Crisps w/ String Cheese	2	Country Chicken on WG Biscuit	3	WG French Toast Sticks	4	Oatmeal Apple Cinnamon Breakfast Round	5
		Applesauce Fruit Punch		Orange Wedges Apple Juice		Apple Slices Fruit Punch		Banana Orange Juice	
WG Cinnamon Raisin Bagel	8	Sausage Breakfast Pizza	9	Egg & Cheese on WG English Muffin	10	Chocolate Chip Oat Bar w/ String Cheese	11	Yogurt w/ Granola	12
		Craisins Grape Juice		Applesauce Fruit Punch		Orange Wedges Apple Juice		Apple Slices Fruit Punch	
Turkey Pancake Wrap	15	WG Waffles w/ Jelly	16	Giant Oat & Honey Grahams w/ String Cheese	17	Oatmeal Apple Cinnamon Breakfast Round	18	Blueberry Nutrigrain Bar w/ String Cheese	19
		Craisins Grape Juice		Applesauce Fruit Punch		Orange Wedges Apple Juice		Apple Slices Fruit Punch	
Chocolate Chip Oat Bar	22	WG Honey Nut Cheerios	23	Chicken Ham & Cheese on WG Bagel	24	Blueberry Muffin	25	WG Bagel w/ Peanut Butter	26
		Craisins Grape Juice		Applesauce Fruit Punch		Orange Wedges Apple Juice		Apple Slices Fruit Punch	
Cheese Bosco Sticks	29	WG Bug Bites w/ Yogurt	30	Sausage & Cheese on WG English Muffin	1	Sausage Breakfast Pizza	2	Strawberry Nutrigrain Bar w/ String Cheese	3
		Craisins Grape Juice		Applesauce Fruit Punch		Orange Wedges Apple Juice		Apple Slices Fruit Punch	

PIE IN THE SKY

Cherries are known as drupes or stone fruits, like nectarines and peaches, and are high in antioxidants. There are more than 500 varieties of sweet cherries (*Prunus Avium*), and almost as many tart ones (*Prunus Cerasus*); though only a small percentage—around 20 or so altogether—are sold commercially. A typical cherry tree produces 7,000 cherries, that can be harvested in seven seconds using a mechanical tree shaker. The state of Washington grows an estimated 62 percent of the United States' sweet cherries, which are great summer snacks. Michigan, meanwhile, grows well over half of the country's tart cherries, which are mostly used for cooking.

DID YOU KNOW?

FOLLOW THE CHERRY TREE ROAD

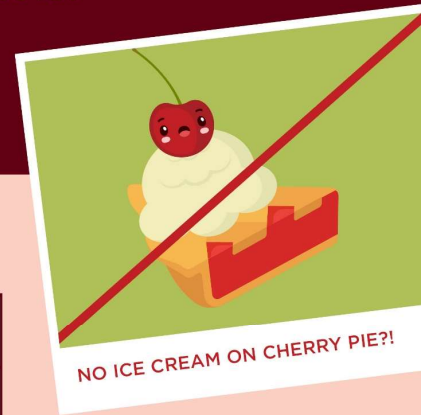
Cherries were part of the Roman soldiers' rations, and as they traveled, the pits they discarded became the trees that bloomed throughout the empire. There was a saying that to find the old Roman roads, all one had to do was follow the wild cherry trees



ACE'S JOKE OF THE MONTH

WHY ARE CHOCOLATE-COVERED CHERRIES THE PERFECT DINNER PARTY HOSTS?

SEE ANSWER BELOW



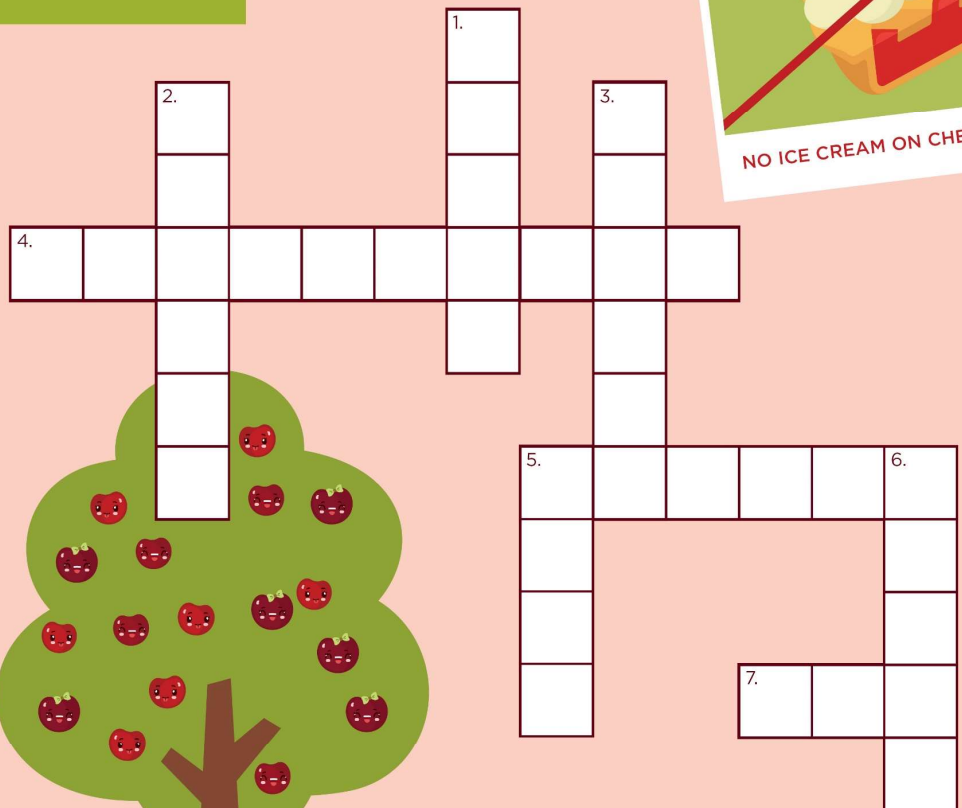
ACTIVITY: CROSSWORD PUZZLE

ACROSS

- Door County, Wisconsin's nickname, earned by its production of 95% of the nation's tart cherries
- State that once prohibited ice cream be served on cherry pie
- Cherries, apples, and blueberries make great filling for this dessert

DOWN

- Fruit often bobbed for in the fall and rumored to help keep the doctor away
- Type of tree George Washington was rumored to have chopped down in his youth
- A monkey's favorite fruit
- Tropical fruit that shares its name with a flightless bird—this fruit is green on the inside, with a brown and fuzzy outside
- The number of seconds it takes to harvest a cherry tree using special machinery



This institution is an equal opportunity provider.

JOKE ANSWER: They are extremely cordial.
 ACTIVITY ANSWER: ACROSS: 4. Cherryland; 5. Kansas; 7. Pie; DOWN: 1. Apple; 2. Cherry; 3. Banana; 5. Kiwi; 6. Seven